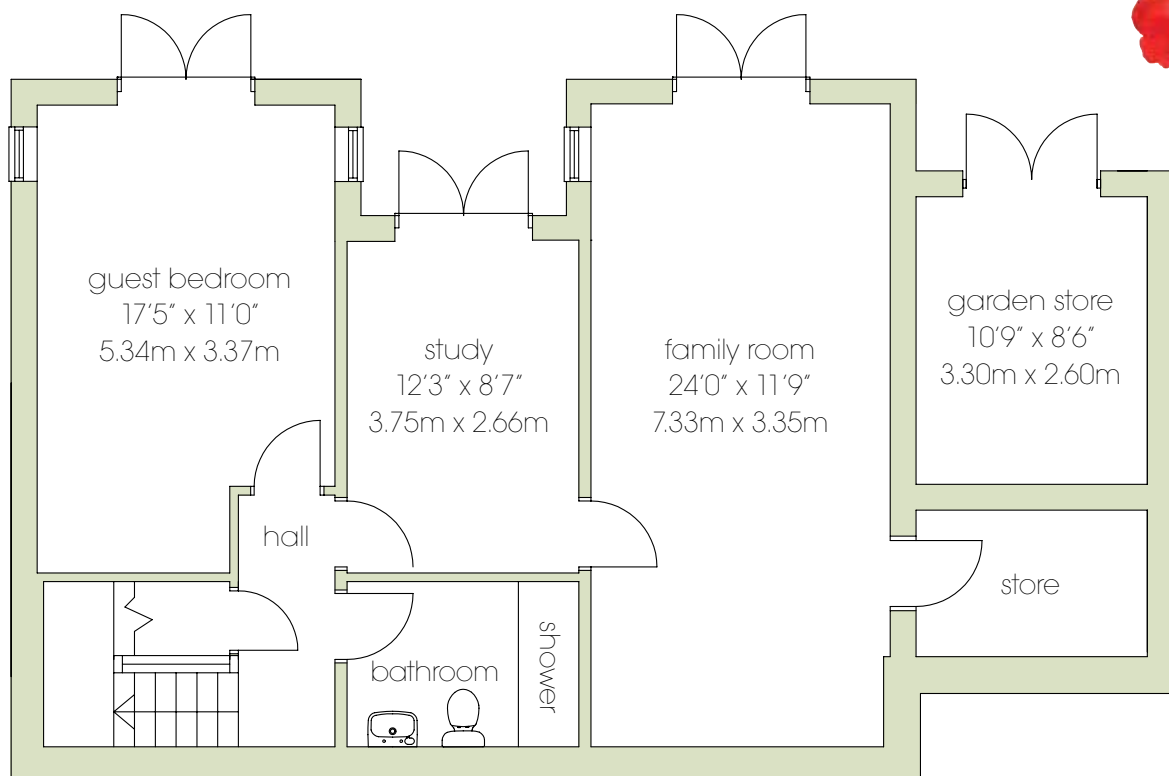


# Coningsby Gardens. Coquet.

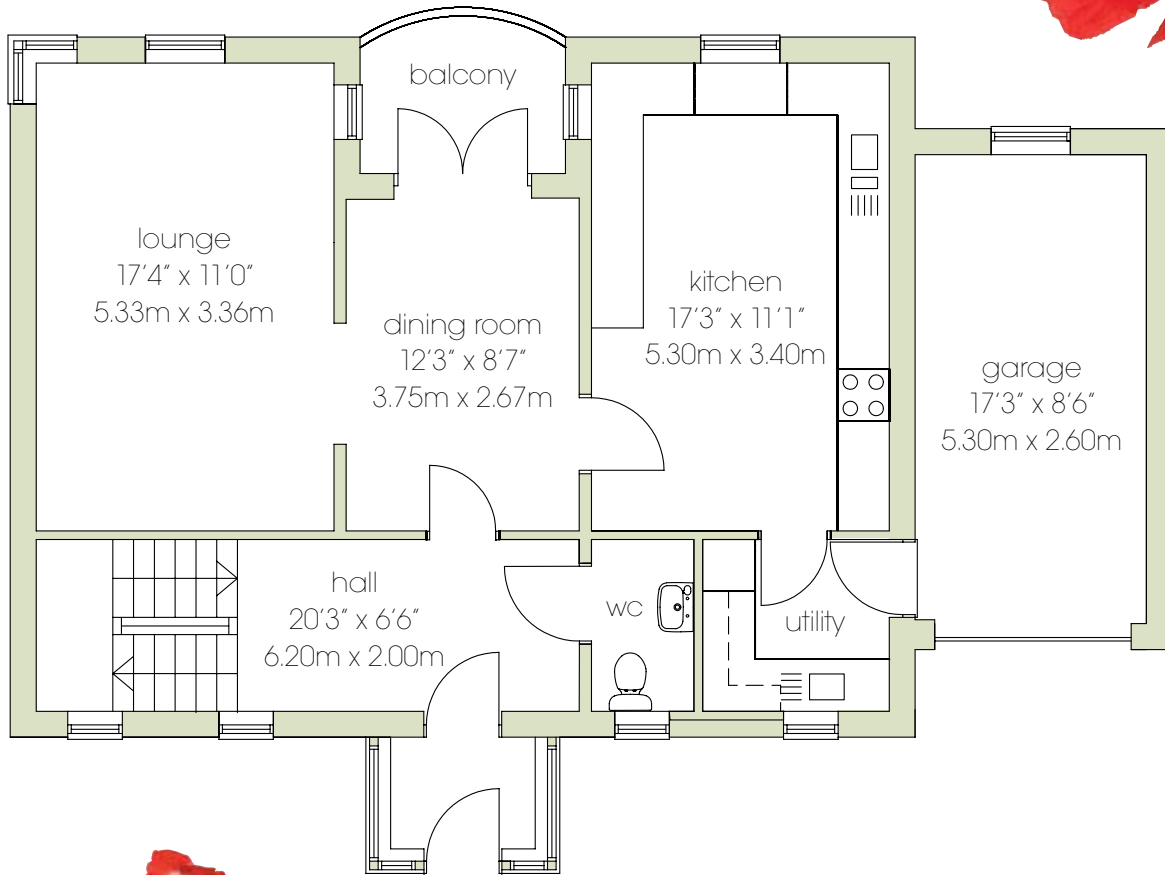


A substantial 3 storey house of approximately 212m<sup>2</sup> (2,290ft<sup>2</sup>) with 5 bedrooms, 4 reception rooms and open views to the north.

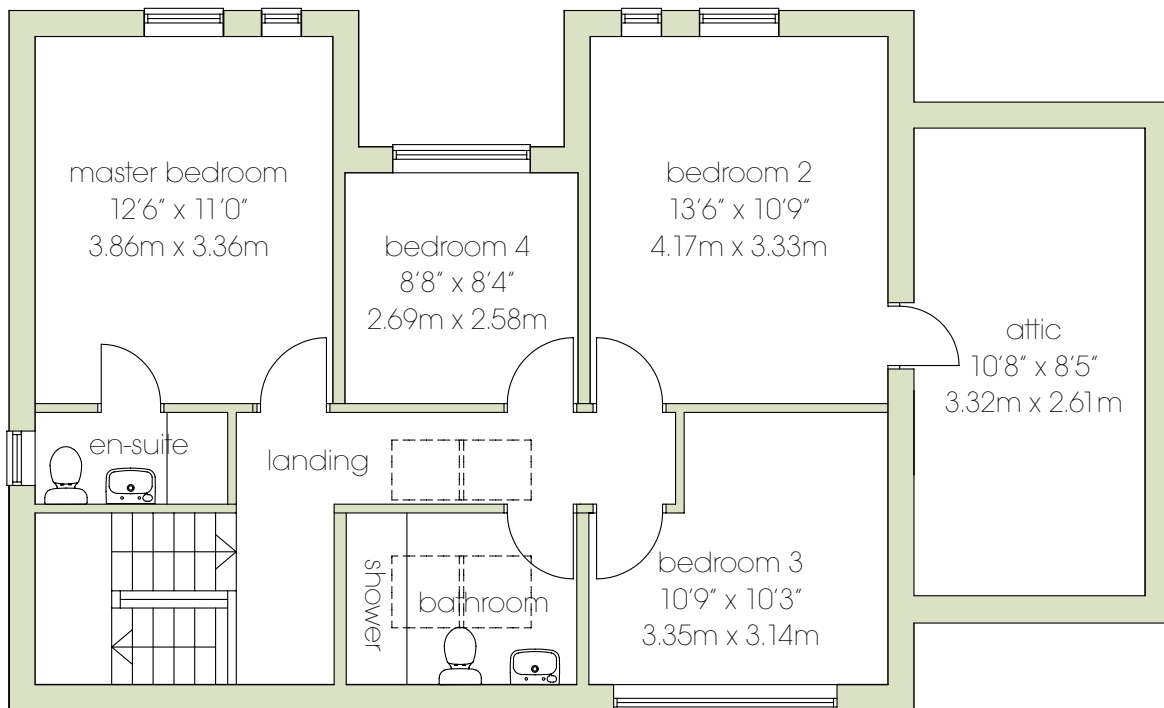


Ground Floor

# Coningsby Gardens. Coquet.



## First Floor



## Second Floor

Although every care has been taken to ensure accuracy, these details are for guidance only and do not form part of any contract, written or implied. We also reserve the right to make minor alterations to the layout and specification without affecting the price.